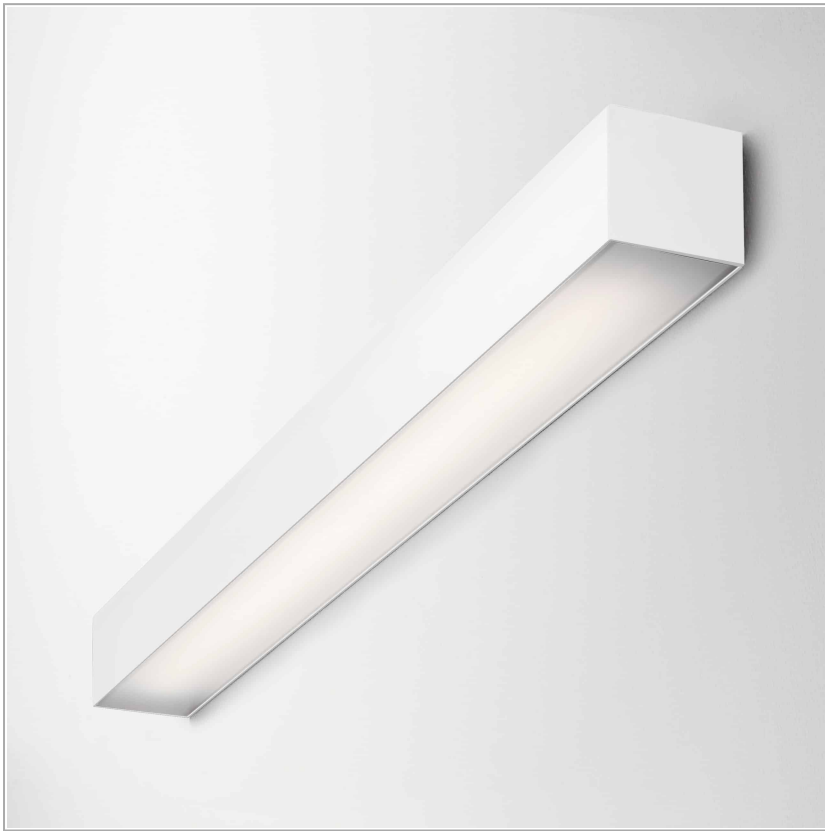


**File 2 Wall**

code F2403.840X/01

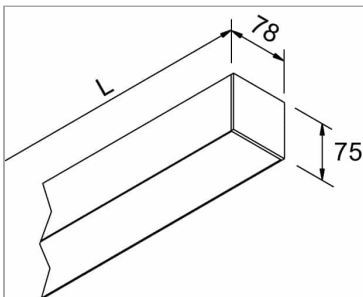


**PRODUCT DESCRIPTION**

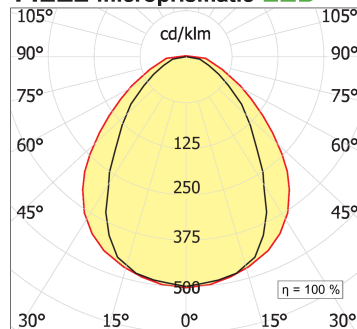
Direct light indoor wall lamp made of extruded aluminium 6060, complete with LEDs; colour rendering index CRI >90. Professional led modules 32 W 4000°K assembled and wired on extruded aluminium heat sink with high performance reflector, equipped with harmonic steel springs for installation in Tools free profile; protocol On/Off. Lamp with white colour finish; made of polycarbonate with diffusing film. Protection class IP40/IP43.

**PRODUCT SPECS**

Installation method	Wall surface mounted
Absorbed power	32 W
Color temperature	4000K
Color rendering index CRI	>90
Optic	Microprismatic diffuser
Finishing	White
Luminous flux of the product	5109 lm
Luminous efficiency	160 lm/W
MacAdam color tolerance	3
Life time estimate	50000h Ta 25° L80B10
Protocol	On/Off
Energy efficiency class	E
Dimension	L55.91"
IP Grade	Inst. Parete Ip40 / Inst. Soffitto Ip43
Power supply	220-240V 50-60Hz



**FILE2 microprismatic LED**



**WEB PAGE**



**ASSEMBLY INSTRUCTIONS**



